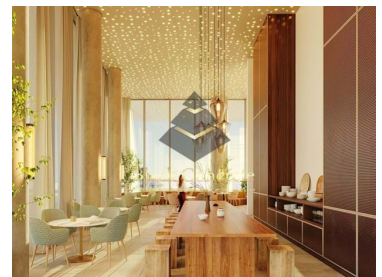
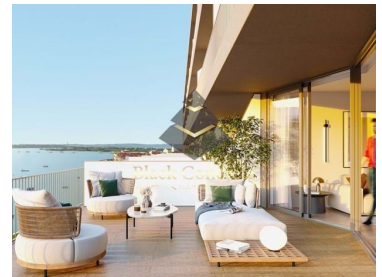
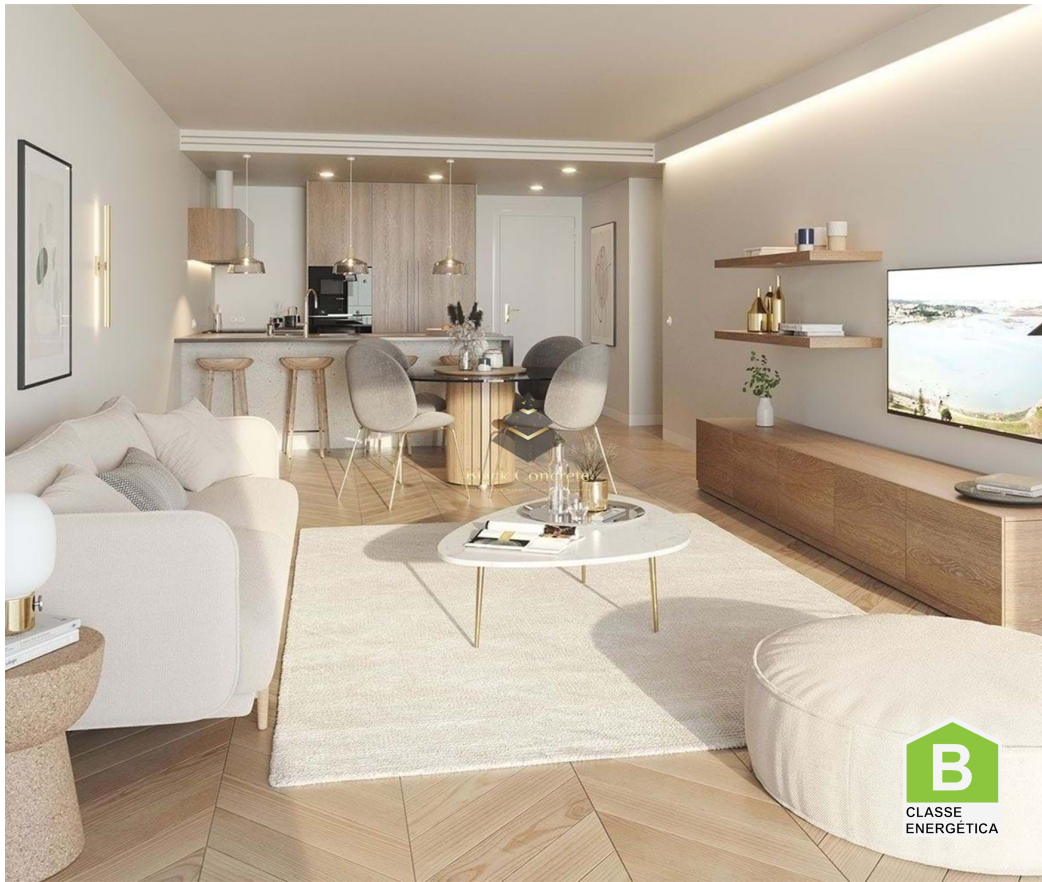




Amora - Apartment



 **1** Bedrooms
 **1** Bathrooms
 **87,4** Area (m²)
 Swimming Pool



325 000 €
(EUR €)

T1 Apartment In Seixal

A one-bedroom apartment belongs to the new development in Seixal. 3% guaranteed return on investment. Owners can stay for free two weeks a year.

There is a Rooftop Restaurant and Bar, a Panoramic Pool, Gym and Sauna, Co-living and Co-working spaces, Events' room.

The Development is situated by the river, is located in the heart of Seixal Bay. You can get to Lisbon by three types of transport: a ferry, a train or a car. The quickest is a ferry, it will take you to Lisbon in 16 minutes.

Where can you get by car and how long will it take:



Seyed Azin Roshan

Director

+351969954444 ²

Azin@blackconcrete.pt

T +351 965 355 530 ² · E info@blackconcrete.pt
Av da liberdade, N 110,1269-046, Lisbon
AMI 17190

¹ (Call to national fixed network) | ² (Call to national mobile network)



BC550

Reference

Scan the QR code to view the property



- 25 minutes drive from Lisbon;
- 20 minutes drive from Caparica Beaches;
- 35 minutes drive from Lisbon Airport;
- 20 minutes drive from Shopping Almada Forum;
- 10 minutes drive from Shopping Rio Sul;
- 22 minutes drive from Golf Course;
- 35 minutes drive from Cascais;
- 30 minutes drive from Setubal.

You will have a 24-hour multilingual reception at your disposal. Many services are available such as room service, cleaning, laundry, breakfast service, wakeup call and mail. There is video surveillance in public and circulation areas. So, you can feel safe living in this complex. It is the right choice for living or investment.

Contact us to know more.

Property Features

- Heating
- Fitted wardrobes
- Pool
- Events space
- Built year: 2024
- Laundry
- Video entry system
- Lift
- Gym
- Energetic certification: B
- Furnished
- Air conditioning
- Equipped kitchen
- Proximity: Beach, Golf course, Shopping, Restaurants, Open field, Hospital, Pharmacy, Public Transport, Schools, Playground
- Sauna
- Private condominium
- Views: River view
- Security alarm
- Double glazing
- Parking space
- Terrace



Seyed Azin Roshan

Director

+351969954444 ²

Azin@blackconcrete.pt

T +351 965 355 530 ² · E info@blackconcrete.pt

**Av da liberdade, N 110,1269-046, Lisbon
AMI 17190**

¹ (Call to national fixed network) | ² (Call to national mobile network)