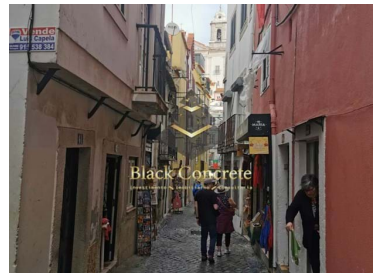
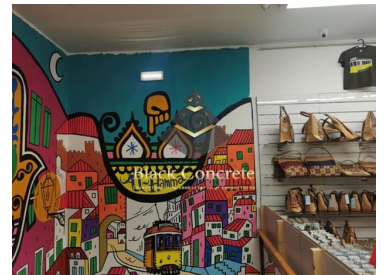




## Santa Maria Maior - Commercial property



Area (m²)

**595 000 €**

(EUR €)

### Renovated Shop In Alfama

The shop is located in the heart of Alfama, in one of the busiest streets, 130 meters from the fado museum. It has 3 doors to the outside. This is a recently renovated commercial space (27 Kwa was achieved with the possibility of increasing even more) with a total area of 115 square meters divided into two floors.

The upper floor sells souvenirs and the lower floor is a cafeteria. The store has a high ceiling, with original stone columns and a striking old moth - making this space unique. Currently, this property has a lease in force which guarantees a very interesting income. The value of the contracted lease is even below the market value, so it will be possible to obtain more income in the future.

This medieval neighborhood (once a Jewish quarter and fishing community) is the second oldest neighborhood in Europe. It is a small village in the middle of the capital, a neighborhood to get lost in



**Seyed Azin Roshan**

Director

+351969954444 <sup>2</sup>

Azin@blackconcrete.pt

**T +351 965 355 530 <sup>2</sup> · E info@blackconcrete.pt**

**Av da liberdade, N 110,1269-046, Lisbon  
AMI 17190**

<sup>1</sup> (Call to national fixed network) | <sup>2</sup> (Call to national mobile network)



BC590

Reference

Scan the QR code to view the property



the alleys and squares, letting yourself be guided by the senses: seeing clotheslines on the balconies and fantastic views of the Tagus, smelling fish being roasted on the corner, listening to the sounds of Fado from the interior of a typical restaurant, savoring traditional dishes and touching magnificent tile panels.

This is the most picturesque neighborhood in Lisbon and the true soul of the city. Here life goes on as it did centuries ago, but going down to the river you enter the 21st century again, with old warehouses now converted into some of the trendiest spaces in the city, to eat, drink and dance until dawn.

The Moment store has a lease in force until 2025.

Property readable for Golden Visa.

## Property Features

- Golden Visa
- Energetic certification: B



**Seyed Azin Roshan**

Director

+351969954444 <sup>2</sup>

Azin@blackconcrete.pt

**T +351 965 355 530 <sup>2</sup> · E info@blackconcrete.pt**

**Av da liberdade, N 110,1269-046, Lisbon  
AMI 17190**

<sup>1</sup> (Call to national fixed network) | <sup>2</sup> (Call to national mobile network)