



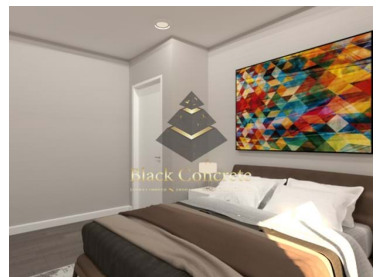
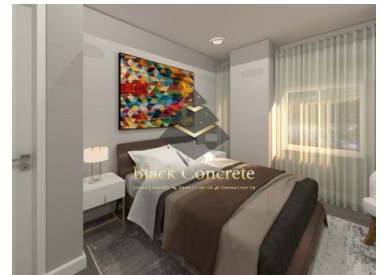
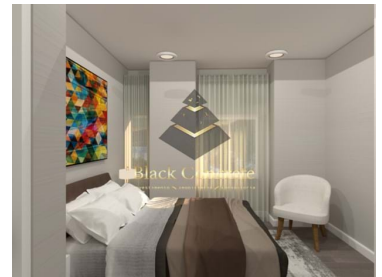
BC591

Reference

Scan the QR code to view the property



## São Vicente - Apartment



 1	 1	 63	 77	<b>299 900 €</b>
Bedrooms	Bathrooms	Area (m <sup>2</sup> )	Land Area (m <sup>2</sup> )	(EUR €)

## T0 Apartment in Sao Vicente

Looking for a modern and comfortable studio apartment in Sao Vicente, Lisbon? This recently renovated property offers a cozy living space with a fully equipped kitchen, complete WC, bedroom, and spacious living room with false ceiling and built-in LED lights.

The kitchen is equipped with white furniture and a tile backsplash, as well as an oven, hob, extractor, microwave, built-in dishwasher, built-in washing machine, water heater, and built-in combi. The complete WC features suspended crockery, while the bedroom and living room are spacious and comfortable.

The building is fully recovered, including the roof, water columns, electricity and sewage, facades, stairs, entrance door, meters, and mailboxes. The property is situated in a family-friendly residential neighborhood with easy access to public transport and various social facilities, including traditional

**Seyed Azin Roshan**

Director

+351969954444 <sup>2</sup>

Azin@blackconcrete.pt

**T +351 965 355 530 <sup>2</sup> · E info@blackconcrete.pt****Av da liberdade, N 110,1269-046, Lisbon  
AMI 17190**<sup>1</sup> (Call to national fixed network) | <sup>2</sup> (Call to national mobile network)



BC591

Reference

Scan the QR code to view the property



trade, design and furniture stores, cafes and restaurants, and new points of commerce and services.

- 2-minutes drive from Mercado de Santa Clara (local market);
- 2-minute drive from CCPSE - Popular Culture Center of Santa Engracia;
- 2-minute drive from Botto Machado Garden;
- 2-minute drive from TM Minimercado (Grocery Store);
- 3-minute drive from ES Gil Vicente School.

It will take you 7 minutes by foot to get to Santa Apolónia Subway Station.

You'll be just a 2-minute drive from the Mercado de Santa Clara local market, the CCPSE Popular Culture Center of Santa Engracia, the Botto Machado Garden, and the TM Minimercado grocery store. ES Gil Vicente School is just a 3-minute drive away, and Santa Apolónia Subway Station is a 7-minute walk away.

Don't miss out on the opportunity to own this charming studio apartment. Contact us today to schedule a visit or for more information.

## Property Features

- Heating
- Dishwashing machine
- Laminated floor
- Proximity: Hospital, Pharmacy, Public Transport, Schools, Playground, Restaurants, Shopping
- Floors: 3
- Double glazing
- Parking space
- Furnished
- Washing machine
- Equipped kitchen
- Air conditioning pre installation
- Built year: 2012
- Views: City view
- Central location
- Solar orientation: North, South



**Seyed Azin Roshan**

Director

+351969954444 <sup>2</sup>

Azin@blackconcrete.pt

**T +351 965 355 530 <sup>2</sup> · E info@blackconcrete.pt**

**Av da liberdade, N 110,1269-046, Lisbon  
AMI 17190**

<sup>1</sup> (Call to national fixed network) | <sup>2</sup> (Call to national mobile network)