



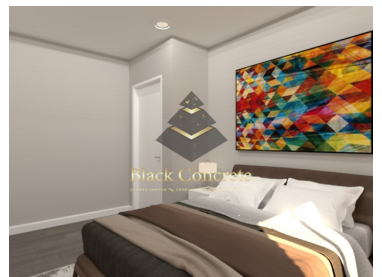
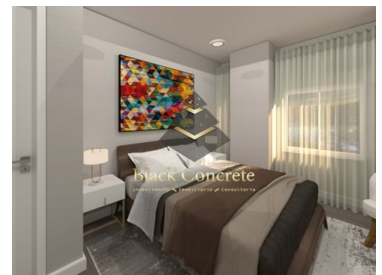
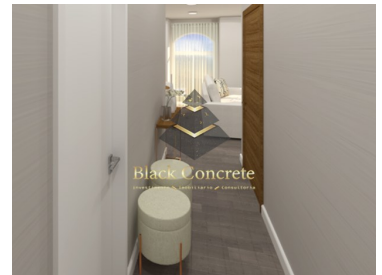
BC600

Reference

Scan the QR code to view the property



São Vicente - Apartment



2

Bedrooms



1

Bathrooms



50

Area (m²)

77

Land Area (m²)**399 900 €**

(EUR €)

T2 Apartment With A River View in Sao Vicente

A two-bedroom Apartment with a River View is located in Sao Vicente, Lisbon. It is renovated: a double glazing and a pre-installation of air conditioning,

The kitchen is fully equipped: white furniture, Tile across the wall behind the furniture, an oven, a hob, an extractor, a microwave, a built-in dishwasher, a built-in washing machine, a Water Heater and a Built-in Combi.

There is an open balcony, two bedrooms: the First with 12m² and Wardrobe and the Second with 12m² and a wardrobe, a living room, a Hall w/ 3m² and a Full bathroom w/ 4m² with suspended crockery. False ceiling with built-in LED lights, in the WC, Kitchen, Living Room and Hall.

The building is FULLY RECOVERED (Roof, Water Columns, Electricity and Sewage, Facades,

**Seyed Azin Roshan**

Director

+351969954444 ²

Azin@blackconcrete.pt

T +351 965 355 530 ² · E info@blackconcrete.pt**Av da liberdade, N 110,1269-046, Lisbon
AMI 17190**¹ (Call to national fixed network) | ² (Call to national mobile network)



BC600

Reference

Scan the QR code to view the property



Stairs, Entrance Door, Meters, Mailboxes).

The property is situated in a family, residential neighborhood with new points of commerce and services. Traditional trade, design and furniture stores, cafes and restaurants Central area, easy access, proximity to public transport, and various social facilities.

- 2-minute drive from Mercado de Santa Clara (local market);
- 2-minute drive from CCPSE - Popular Culture Center of Santa Engracia;
- 2-minute drive from Botto Machado Garden;
- 2-minute drive from TM Minimercado (Grocery Store);
- 3-minute drive from ES Gil Vicente School.

It will take you 7 minutes by foot to get to Santa Apolónia Subway Station.
Contact us to schedule your visit.

Property Features

- Heating
- Dishwashing machine
- Laminated floor
- Proximity: Restaurants, Shopping, Hospital, Pharmacy, Public Transport, Schools, Playground
- Floors: 3
- Double glazing
- Parking space
- Balcony
- Washing machine
- Equipped kitchen
- Air conditioning pre installation
- Built year: 2012
- Views: City view
- Central location
- Solar orientation: North, South
- Furnished



Seyed Azin Roshan

Director

+351969954444 ²

Azin@blackconcrete.pt

T +351 965 355 530 ² · E info@blackconcrete.pt

**Av da liberdade, N 110,1269-046, Lisbon
AMI 17190**

¹ (Call to national fixed network) | ² (Call to national mobile network)