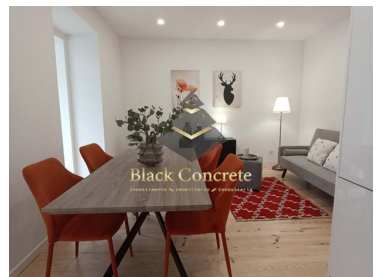
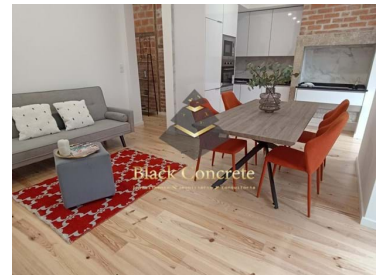
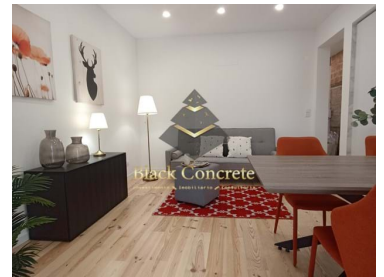





Penha de França - Apartment



 **2**
Bedrooms

 **1**
Bathrooms

 **85,5**
Area (m²)

369 900 €
(EUR €)



T2 Apartment In Penha De Franca

The renovated 2-bedroom apartment is situated in Penha de França, Lisboa. Kitchen combined with the living room has access to the Marquise with 9m², where there is a WC with 2m².

The kitchen has white furniture with tile throughout the wall behind. There is an oven, a hob, an extractor hood, a microwave, a built-in dishwasher, a built-in washing machine and thermo accumulator.

The property has a hall 2m² and 2 Bedrooms: the first with 25m², closet and suite, the second - with 18m² and closet.

All rooms have white lacquered frames with double glazing. False ceiling with built-in LED lights is throughout the house.



Seyed Azin Roshan

Director

+351969954444 ²

Azin@blackconcrete.pt

T +351 965 355 530 ² · E info@blackconcrete.pt

Av da liberdade, N 110,1269-046, Lisbon
AMI 17190

¹ (Call to national fixed network) | ² (Call to national mobile network)



Apartment T2+2

Reference

Scan the QR code to view the property



You will also have a pre-Installation of air conditioning, electric Blinds and two Fronts. Building is in a good condition and has an excellent location, close to transport, schools, commerce, banks, pharmacy, Morais Soares.

- 3 minutes drive to the market, where you can buy fresh fruit, vegetables, etc.;
- 8 minutes drive to the Children's Hospital;
- 15 minutes drive to Santa Marta Hospital;
- 15 minutes drive to the beautiful Garden "Jardim do Torel";
- 2 minutes drive to the Subway Station;
- 13 minutes drive to the Park with amazing views "Parque Eduardo VII".
- 13 minutes drive to the International Airport.

This property is a wonderful place for living, if you like comfort and short distances. Don't hesitate to contact us for more information.

Property Features

- Equipped kitchen
- Proximity: Hospital, Pharmacy, Public Transport, Schools, Restaurants, City, Shopping
- Floors: 4
- Double glazing
- Energetic certification: D
- Air conditioning pre installation
- Built year: 1982
- Views: City view
- Electric shutters
- Furnished



Seyed Azin Roshan

Director

+351969954444 ²

Azin@blackconcrete.pt

T +351 965 355 530 ² · E info@blackconcrete.pt

**Av da liberdade, N 110,1269-046, Lisbon
AMI 17190**

¹ (Call to national fixed network) | ² (Call to national mobile network)